

University of Arizona

Arizona Public Media New Facility

The Paul and Alice Baker Center for Public Media

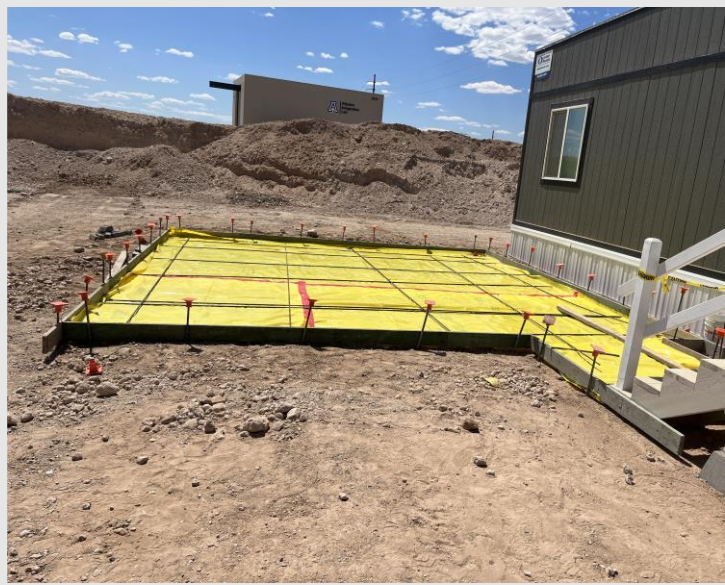
Construction Project Update – May 2024



CURRENT SITE OVERVIEW

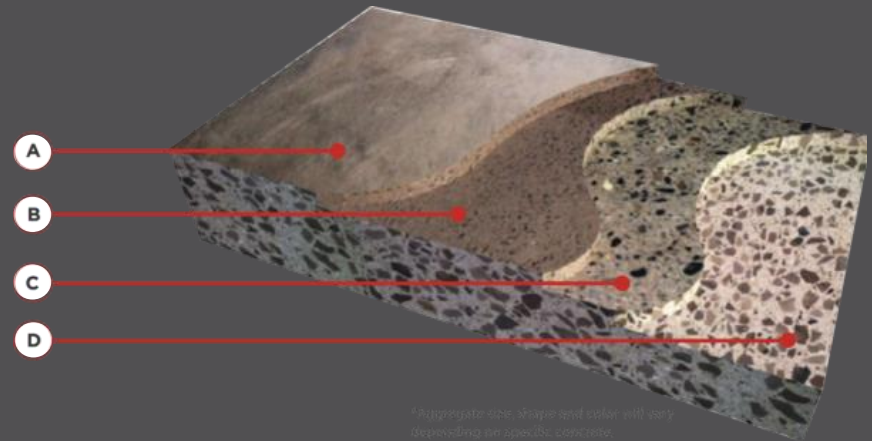


QUALITY MOMENT



This month we prepped and placed a mockup of the ground concrete floors. This process ensures alignment between the owner, end user, architect, and contractor on the expectations for the finish of the floors. Doing mockups helps to make sure that everyone is on the same page and that there are no surprises or deficiencies at the end of the project. The mockup will be left in place until the end of the project to refer back to for the standard of quality on the ground and polished concrete floors.

QUALITY MOMENT



The mockup was split in to 4 sections and different levels of grinding were done on each quadrant to show the different options. The levels of grinding are split into classes, A, B, C, and D. Class A is the lightest of the grinds and class D is the heaviest grind. The first quadrant only received a sanding and a polish as that is the finish in the “back of house” spaces. Each of the other 3 quadrants received a class B, class C, or a class D grind. It was determined that a class D grind will be used on this project.

PROGRESS UPDATE



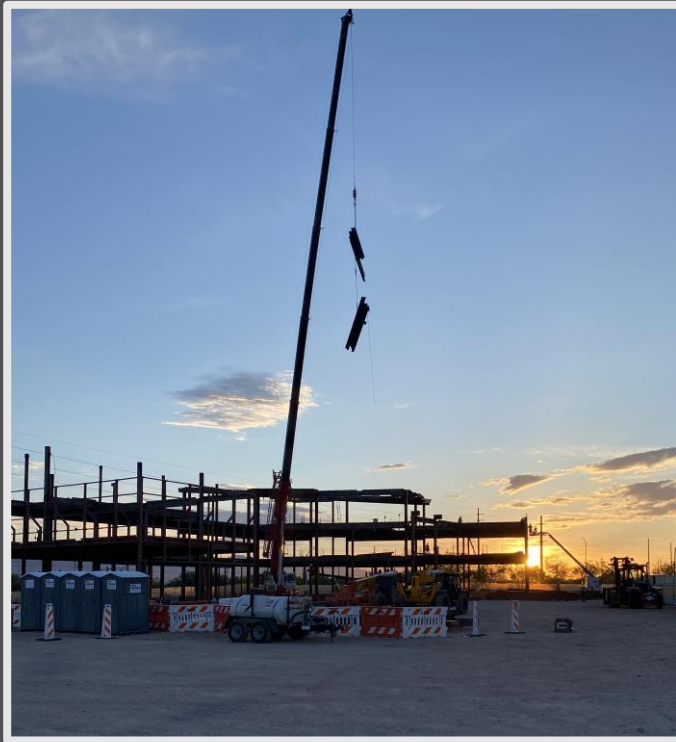
Columns ready for pick up and placement



View of level 1 from the Northwest corner

This month the main activity on site was steel erection, detailing, and decking. Detailing is a blanket term for all of the onsite welding, bolting, and plumbing that has to happen before the steel structure is complete, but it secondary to the erection process of getting the steel in the air.

PROGRESS UPDATE



Sometimes multiple steel members are picked up by the crane simultaneously and then set in place one by one. This is called “Christmas Treeing”.



View down the East side of the building, looking South.

PROGRESS UPDATE



A beautiful sunrise on the AZPM project.

LOOKING AHEAD



In June the mechanical, electrical, and plumbing (MEP) rough-in will begin, placements will begin for the concrete floors, and the priority wall framing will start.

You can always keep up with what is happening on site by checking out the live construction feed on the UA PDC website. [Project Camera](#)